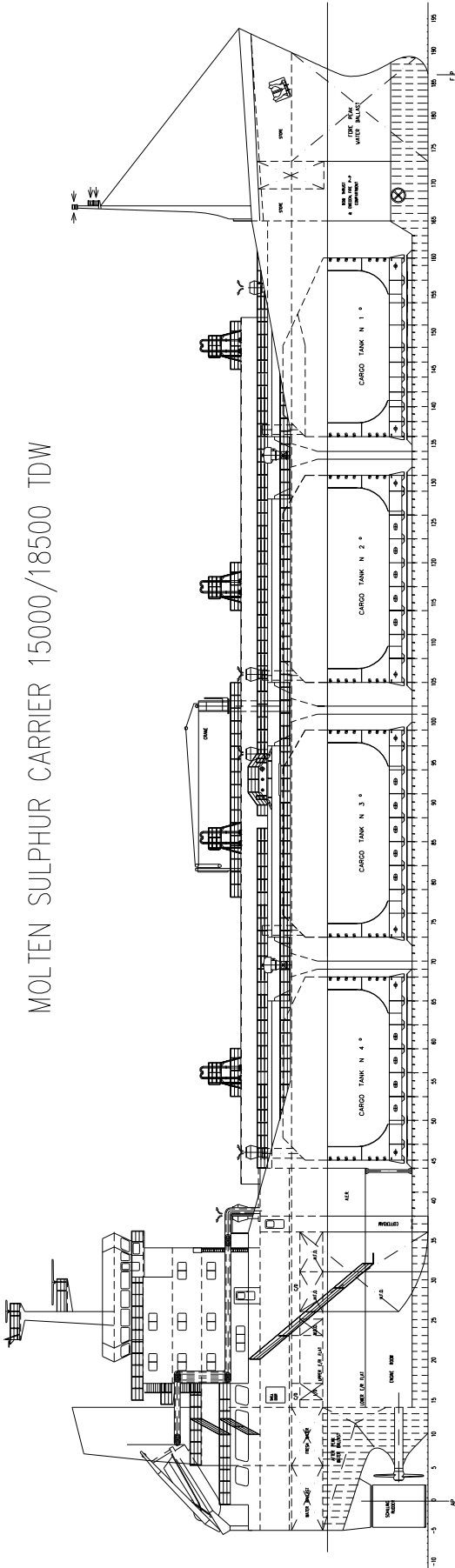
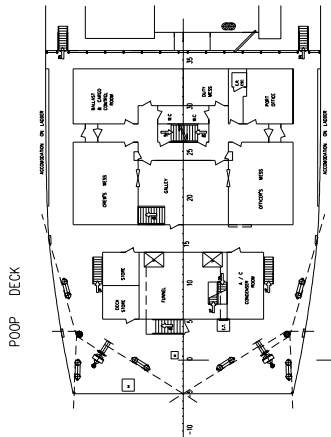


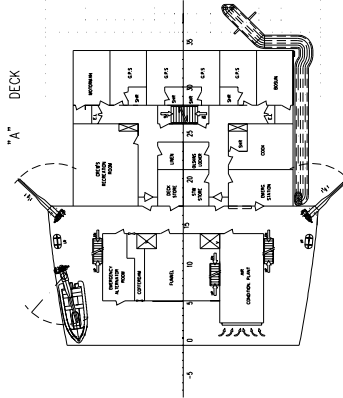
MOLTEN SULPHUR CARRIER 15000/18500 TDW



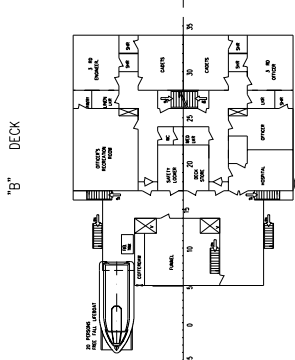
POOP DECK



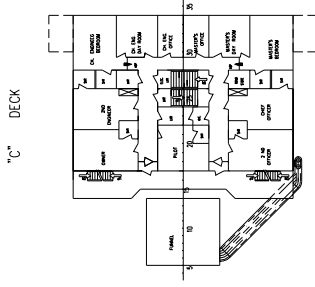
"A" DECK



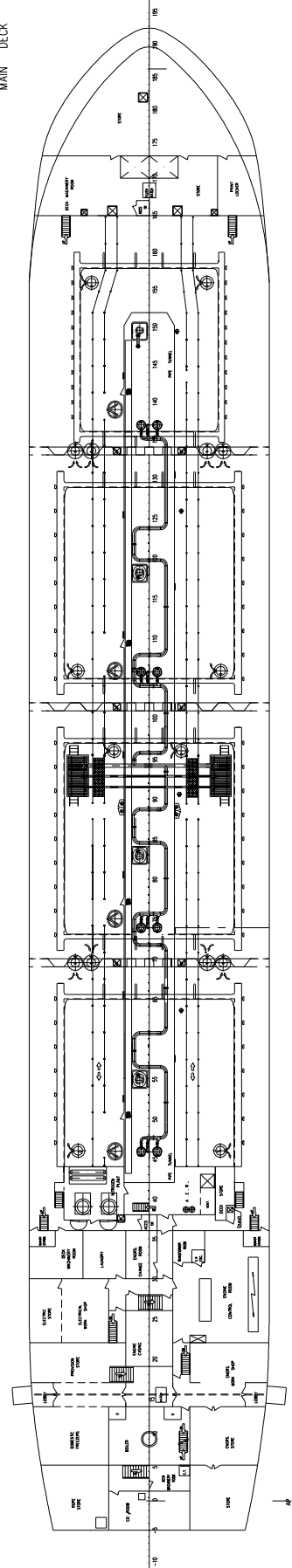
"B" DECK



"C" DECK



MAIN DECK



TECHNICAL PROJECT OF CONVERSION OF 15000/18500 TDW BULKCARRIER, PAL INDONESIA for carriage of molten sulphur in independent tanks.

MAIN DIMENSIONS:

LENGTH O.A.	141,35 M
LENGTH P.P.	134,30
BREADTH MOULDED	22,50 M
DEPTH TO MAIN DECK	12,85 M
DRRAUGHT (design)	8,25 m
DEADWEIGHT at draught 8,25 m	13200 DWT
DEADWEIGHT at draught 9,47 m	16550 DWT
Speed	13,0 KN

SPECIAL CARGO FEATURES:

For cargo provided a special cargo handling, control and monitoring system (remote operation of cargo and tank washing, level gauging, temp. readout cargo pressure and pressure in vapour line readout, load computer etc.)

CLASS: LR+100A1 Chemical Tanker, Ship type 3, molten sulphur in independent tanks, S.G. 1,8 t/m³, max. temp. 150 deg C.

CARGO TANKS

Tank	Fr. – Fr.	Volume (cub. m)
N ^o 1	136 – 162	1880
N ^o 2	105 – 129	2650
N ^o 3	73 – 99	2650
N ^o 4	45 – 67	2200
TOTAL		9400